

Summer SEND Newsletter

Your termly newsletter about SEND in our school!

14th July 2025

HELLO
Summer



What a term!

We have had another busy term at Ormsgill! The children have been working hard through this term in both good and not so good weather!

In The Hive, the children have been learning about where we live, Paddington's adventures and much more.

In Lego Club, the groups have been planning and building their own Lego creations and working together!

We hope you have a wonderful and restful summer holidays!



Fundraising with FOOS

FOOS (Friends of Ormsgill School) have met their fundraising target to renew our wonderful sensory room! A huge thank you to FOOS and all of the parents and carers who have supported the FOOS fundraising efforts! The sensory room will be refurbished during the holidays, ready for a launch in the Autumn term!

As Ormsgill's Child and Family Support Worker, I am here to offer support and advice regarding your child or family. I can also support with my knowledge of outside agencies and what they can offer. Contact me (Mrs Mayvers) via class dojo or our SEND office number: 07351315668



Our SEND Team



As Ormsgill's Special Educational Needs and Disability Coordinator (SENCO), I am here to offer support and advice regarding additional needs or SEND support for your child. Contact me (Mrs Crook) via class dojo or our SEND office number: 07351315668

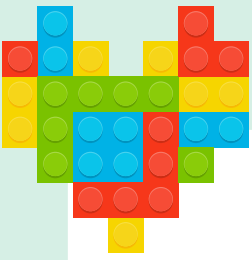




The Hive

We have had lots of very exciting activities and themed weeks in The Hive this term! We have looked at living things (including growing our own plants), Paddington's Adventures and 'Where We Live', along with some sensory play!





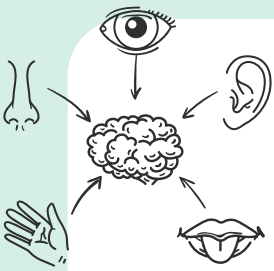
Lego Club

This term, Miss Bunting has been leading our 'Lego Club'. In Lego Club, children learn how to communicate effectively (listening, turn taking, following instructions) to each other by taking on different roles and building lots of Lego figures together. The children have loved every session and are always very proud of what they have made as a team!



SEND Spotlight

When parents hear the terms 'Special Educational Needs' or 'Learning difficulty', it can cause anxiety, particularly if they are bombarded with various terminology, phrases, conditions, and diagnoses commonly discussed by professionals. At Ormsgill, our aim is to assist parents in understanding the 'jargon' and provide guidance, advice, and strategies to support their child at home.



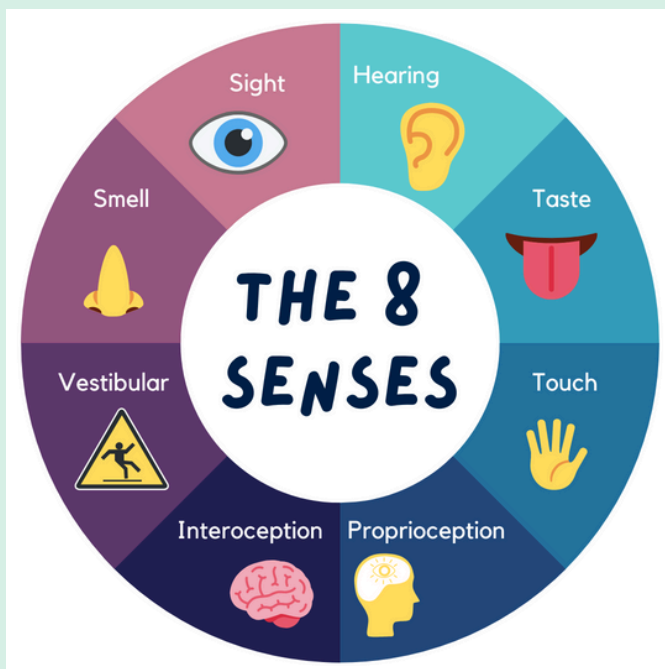
Sensory Processing

Sensory processing issues are when the brain struggles to process information coming from the different senses. It can result in over or under sensitivity to sensory information.

To find out more, visit the website:
www.autismspeaks.org/sensory-processing-disorder

What can Sensory Processing difficulties look like?

- Increased motion, including bouncing, spinning, or colliding with objects
- Increased stimming, including rocking back and forth, making repetitive noises, or flapping hands
- Speaking louder and more quickly, or not speaking at all
- Covering your eyes or ears
- Inability to identify internal feelings such as hunger, pain, or needing the toilet
- Refusing or insisting on particular foods or clothing
- Chewing on non-food objects frequently
- Playing rough or touching different textures frequently
- Communication or response issues as the brain tries to handle sensory input (shutdown)
- Increasing, overpowering feelings or the need to flee a circumstance (meltdown)



S U M M E R

Summer Activities

Horse Riding

For children with additional needs

Friday 25th July
Friday 1st August
Friday 8th August
Friday 15th August
Friday 22nd August
Friday 29th August

We have three time slots, for Horse Riding at Seaview Riding School, 10am, 11am, 12pm

Please note these will be on a first come first serve basis. As we only have limited places, children have not been recently will be given priority.

If you would like your child to attend please contact louise.scarr@barrowlfc.com





BEE UNIQUE

AUTISM

📅 From 9 Jul 2025

July, 2025

- 12 Sat 10:30am BST 🐝 ***BARROW*** 🌈 EXCLUSIVE BEE UNIQUE 🧠 SENSORY PLAY 🧸 - at 'Ormsgill Community Centre' with BEE UNIQUE REP 'Gemma Johnson'
- 20 Sun 10:45am BST 🐝 ***ULVERSTON*** 🌈 EXCLUSIVE BEE UNIQUE SESSION - SPORTS 🏃 🌊 - SENSORY SPORT SESSION with BEE UNIQUE REP 'Hayleigh Knibbs'

August

- 3 Sun 11am BST 🐝 ***ULVERSTON*** 🌈 - EXCLUSIVE BEE UNIQUE SESSION - PARTY 🎉 🎆 - SUMMER FUN PARTY with BEE UNIQUE REP 'Hayleigh Knibbs'
- 15 Fri 3pm BST 🐝 ***BARROW*** 🌈 EXCLUSIVE BEE UNIQUE ACTIVITY 🏀 🏰 - Sport and Inflatable - A free flowing sensory sport & bouncy castle activity with BEE UNIQUE Rep 'Gemma Johnson'
- 17 Sun 11am BST 🐝 ***ULVERSTON*** 🌈 - EXCLUSIVE BEE UNIQUE SESSION - SENSORY 🧠 🧸 - Join BEE UNIQUE REP 'Hayleigh Knibbs' for a MESSY SENSORY PLAY SESSION



ADVANTAGE!
BARROW RAIDERS
COMMUNITY FOUNDATION

Summer Activities

For Children with Additional Needs

Every Wednesday

Wheels4All Bikes,
1-2pm
Boat House,
Barrow Park.

Pedalos,
2pm-3pm
Boat House,
Barrow Park.

AquaMax
6.30-7.15pm
Children's Pool
Park Leisure Centre

Every Thursday

Greenacres,
10am-12pm
Wellness @ Greenacres,
Park Road.

Every Tuesday

PlayMax
3.45-4.45pm
Main Hall,
Park Leisure Centre



Tuesday 5th August

Cumbria Wildlife Trust
Beach Fun,
2-3.30pm
Meet @ Roundhouse Hub
Biggar Bank, Walney

Monday 1st September

Cumbria Wildlife Trust
Beach Fun,
10.30am-12pm
Meet @ Roundhouse Hub
Biggar Bank, Walney



Francis Scott
Trust

SMITHS



Westmorland
& Furness
Council